

RESISTENT | SAFELY | STORING



# Fire resistant storage

classified to EN 13501-2

- fire resistance inside and outside -

EI90 –  
walkable fire resistant  
storage

EI90 –  
variations of  
equipment

EI90 –  
shelf container



## Fire resistant storage – classified to EN 13501-2

System: fire resistant storage steel EI 90

EI 90 with EN 13501-2



Institute  
for Fire  
Protection  
and Safety  
Research



Preparation for the combustor test



View into the inside during the test

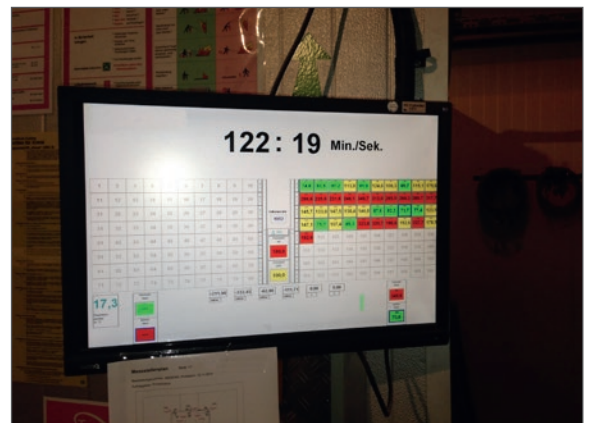


### Essentials:

- combustor tested according to European norms
- fire resistant class EI90, over 90 minutes from inside and outside
- tested by accredited institution in Germany
- classified to EN 13501-2 by European accredited institution
- according to valid maintenance of industrial health and safety standards

### Performance:

- advantage: variable measurements available
- biggest product portfolio of fire resistant storages
- practice-oriented solutions for storages of small items, drums or IBCs
- standard systems and special solutions available
- suitable for inflammable, fire supporting, toxic medias, organic peroxide
- flexible installation on locations inside and outside buildings
- plug & store delivery ready to use
- comprehensive equipment and facility lines



Look on the controlling monitor after 122 minutes

## BLS walkable fire resistant storage EI90

The standardized BLS fire resistant storages from Protectoplus based on the know-how of hundreds hazardous storages built after individual customer requirements. The BLS storages are fire resistant from inside and outside over a period of 90 minutes according to EN 13501-2.

With integrated sump they are suitable for locations inside and outside of buildings.

Each fire resistant storage represents an own fire-compartment.



BLS 2460 with double wing-door on the long-side and ramp (optional facility)



BLS inside view with shelves for small items (optional)

- EI90 fire resistance inside and outside
- delivered turnkey
- stable, welded design
- thermally insulated with a high thermal insulation value
- with integrated steel sump S235JR after DIN EN 10025
- storage level with removable steel gratings, hot galvanized with a loading capacity of 1000 kg/m<sup>2</sup>
- automatic ally closing doors with anti-panic function, suitable on the short or long-side
- low threshold 160 mm
- anti-corrosion paint in RAL 9002 grey-white



BLS 2960 with two 1-wing doors



BLS 2960 with 2-winged door on the short-side

### BLS walk-in 2400 width, load bearing capacity: 1.000 kg/m<sup>2</sup>, EI90

Designation	External dim. mm (l x w x h)	Internal dim. mm (l x w x h)	Collec. volume l	storage area m <sup>2</sup>	weight to	Order no.
BLS 2420	2140 x 2430 x 2530	1790 x 2200 x 2100	500	3,5	2,0	147000
BLS 2430	3140 x 2430 x 2530	2790 x 2200 x 2100	780	5,5	2,1	147002
BLS 2440	4140 x 2430 x 2530	3790 x 2200 x 2100	1060	7,6	2,4	147004
BLS 2450	5140 x 2430 x 2530	4790 x 2200 x 2100	1340	9,7	2,9	147006
BLS 2460	6140 x 2430 x 2530	5790 x 2200 x 2100	1620	11,8	3,2	147008
BLS 2470	7140 x 2430 x 2530	6790 x 2200 x 2100	2 x 940	13,9	4,1	147010
BLS 2480	8140 x 2430 x 2530	7790 x 2200 x 2100	2 x 1050	15,9	4,7	147012

### BLS walk-in 2900 width, load bearing capacity: 1.000 kg/m<sup>2</sup>, EI90

Designation	External dim. mm (l x w x h)	Internal dim. mm (l x w x h)	Collec. volume l	storage area m <sup>2</sup>	weight to	Order no.
BLS 2920	2140 x 2930 x 2930	1790 x 2700 x 2500	650	4,3	2,3	147022
BLS 2930	3140 x 2930 x 2930	2790 x 2700 x 2500	960	6,9	2,5	147024
BLS 2940	4140 x 2930 x 2930	3790 x 2700 x 2500	1300	9,5	2,9	147026
BLS 2950	5140 x 2930 x 2930	4790 x 2700 x 2500	1650	12,0	3,4	147028
BLS 2960	6140 x 2930 x 2930	5790 x 2700 x 2500	1950	14,6	3,9	147030
BLS 2970	7140 x 2930 x 2930	6790 x 2700 x 2500	2 x 1100	17,2	4,4	147032
BLS 2980	8140 x 2930 x 2930	7790 x 2700 x 2500	2 x 1300	19,8	4,9	147034
BLS 2990	9140 x 2930 x 2930	8790 x 2700 x 2500	2 x 1450	22,4	5,5	147036
BLS 29100	10140 x 2930 x 2930	9790 x 2700 x 2500	2 x 1650	25,0	6,7	147038
BLS 29110	11140 x 2930 x 2930	10790 x 2700 x 2500	2x 1850	27,5	7,3	147040
BLS 29120	12140 x 2930 x 2930	11790 x 2700 x 2500	2 x 1950	30,1	7,7	147042

## Fire resistant storage BLS R EI90 EN 13501-2

If the handling of hazardous substances in drums and IBCs via forklift vehicles are required, the BLS fire resistant shelf is the right solution.

The fire resistant storage shelf BLS R provides all necessary requirements for the safe storage.

Flexible locations inside and outside buildings. Fire resistance about 90 minutes.



Two BLS 2730 R



BLS 2226 R



BLS loading process

- EI90 fire resistance inside and outside
- delivered turnkey
- stable, welded design
- thermally insulated with a high thermal insulation value
- with integrated steel sump S235JR after DIN EN 10025
- automatically closing doors
- installation in a row possible
- shelf-loading capacity:  
3000 kg for pallet-shelves,  
4000 kg for IBC-shelves

### Fire resistant storage shelf container steel, EI90

Designation	External dim. mm (l x w x h)	Box dimensions mm (l x w x h)	storage capacity	Collec. volume l	Order no.
<b>BLS 2220 R</b>	2680 x 1740 x 2530	2200 x 1530 x 1950	2 IBC à 1.000 l or 6 drums à 200l on the gratings or 4 drums à 200l on 1 chemical pallets or 4 drums à 200l on 2 europallets	320	<b>143071</b>
<b>BLS 2226 R</b>	2680 x 1740 x 3290	2200 x 1530 x 2550		1000	<b>143068</b>
<b>BLS 2230 R</b>	2680 x 1740 x 3690	2200 x 1530 x 2950		1000	<b>143028</b>
<b>BLS 2233 R</b>	2680 x 1740 x 3990	2200 x 1530 x 3250		1000	<b>143072</b>

### Fire resistant storage shelf container steel, EI90

Designation	External dim. mm (l x w x h)	Box dimensions mm (l x w x h)	storage capacity	Collec. volume l	Order no.
<b>BLS 2720-3 R</b>	3180 x 1740 x 2530	2700 x 1530 x 1950	8 drums à 200l on the gratings or 8 drums à 200l on 2 chemical pallets or 6 drums à 200l on 3 europallets	320	<b>143037</b>
<b>BLS 2720-10 R</b>	3180 x 1740 x 2640	2700 x 1530 x 1950	2 IBC à 1.000 l or 8 drums à 200l on the gratings or 8 drums à 200l on 2 chemical pallets or 6 drums à 200l on 3 europallets	1000	<b>143038</b>
<b>BLS 2726-3 R</b>	3180 x 1740 x 3130	2700 x 1530 x 2550	8 drums à 200l on the gratings or 8 drums à 200l on 2 chemical pallets or 6 drums à 200l on 3 europallets	320	<b>143003</b>
<b>BLS 2726-10 R</b>	3180 x 1740 x 3240	2700 x 1530 x 2550	2 IBC à 1.000 l or 8 drums à 200l on the gratings or 8 drums à 200l on 2 chemical pallets or 6 drums à 200l on 3 europallets	1000	<b>143005</b>
<b>BLS 2730-10 R</b>	3180 x 1740 x 3640	2700 x 1530 x 2950	2 IBC à 1.000 l or 8 drums à 200l on the gratings or 8 drums à 200l on 2 chemical pallets or 6 drums à 200l on 3 europallets	1000	<b>143013</b>
<b>BLS 2733-10 R</b>	3180 x 1740 x 3940	2700 x 1530 x 3250	2 IBC à 1.000 l or 8 drums à 200l on the gratings or 8 drums à 200l on 2 chemical pallets or 6 drums à 200l on 3 europallets	1000	<b>143021</b>

Technical specifications subject to change.

